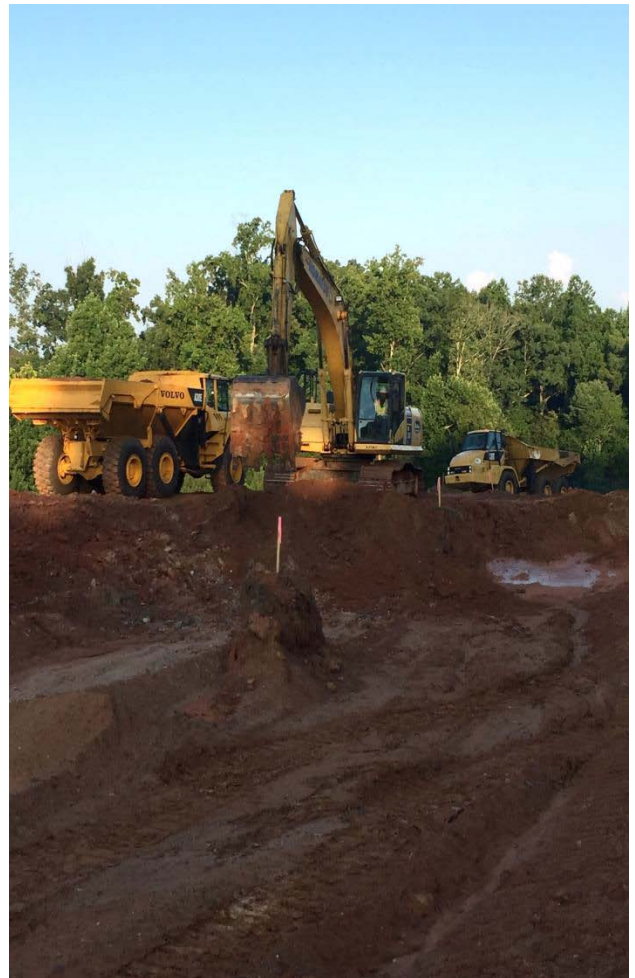


## Project: Laurel Canyon



### SCOPE OF WORK

Georgia Development Partners was contracted by Kolter Land Development, Inc to perform full site development including:

- Clearing
- Grading
- 1200 LF 18" DIP Water Line
- Sanitary Sewer
- Storm Drain
- Curb & Gutter
- Lot Padding
- Asphalt Paving

### CLIENT

Kolter Land Development, Inc.

### ROLE

Prime Contractor  
Licensed General Contractor  
Licensed Utility Contractor

### SIZE

67 Lots in 2 Phases of 4  
Months Each

### COST

\$1.15 M